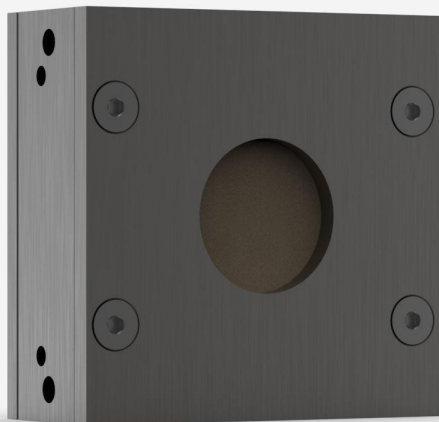


## UP19K-15S-H5-D0

Thermal detector for laser power measurement up to 15 W.



### KEY FEATURES

#### MODULAR CONCEPT

Increase the power capability of your detector: 5 different cooling modules

#### HIGH PERFORMANCE

- Fast rise time (0.6 sec)
- High damage threshold (36 kW/cm<sup>2</sup>)

#### COMPACT DESIGN

Only 20.6 mm thick (15S model)

#### ENERGY MODE

Measure single shot energy up to 15 J

#### SMART INTERFACE

Containing all the calibration data

#### COMPATIBLE STAND

[STAND-S-233](#)

## SPECIFICATIONS

### MEASUREMENT CAPABILITIES

Maximum average power (continuous)	15 W
Maximum average power (1 minute)	30 W
Noise equivalent power <sup>1</sup>	1 mW
Spectral range <sup>2</sup>	0.193 - 20 μm
Typical rise time <sup>3</sup>	0.6 sec
Typical power sensitivity <sup>4</sup>	0.65 mV/W
Power calibration uncertainty <sup>5</sup>	±2.5 %
Repeatability	±0.5 %

1. Nominal value, actual value depends on electrical noise in the measurement system.
2. For the calibrated spectral range, see the user manual.
3. With anticipation.
4. Into 100 kΩ load. Maximum output voltage = sensitivity x maximum power.
5. Including linearity with power.

### MEASUREMENT CAPABILITIES (ENERGY MODE)

Typical energy sensitivity	0.65 mV/J
Maximum measurable energy <sup>1</sup>	15 J
Noise equivalent energy <sup>2</sup>	0.02 J
Minimum repetition period	4 s
Maximum pulse width	88 ms
Energy calibration uncertainty <sup>3</sup>	±5 %

1. For 360 μs pulses. Higher pulse energy possible for long pulses (ms), less for short pulses (ns).
2. Nominal value, actual value depends on electrical noise in the measurement system.
3. When single-shot energy calibration is purchased

### DAMAGE THRESHOLDS

Maximum average power density <sup>1</sup>	36 kW/cm <sup>2</sup>
Maximum energy density <sup>2</sup>	1 J/cm <sup>2</sup>

1. At 1064 nm, 10 W CW.
2. At 1064 nm, 7 ns, 10 Hz.

## PHYSICAL CHARACTERISTICS

Aperture diameter	19 mm
Absorber	H5
Dimensions	50H x 50W x 20.6D mm
Weight	0.16 kg

## ORDERING INFORMATION

UP19K-15S-H5-D0	200142
UP19K-15S-H5-BLU-D0	203433
UP19K-15S-H5-IDR-D0	203337
UP19K-15S-H5-INT-D0	202617

## INTERESTED IN THIS PRODUCT?

GET A QUOTE

Find your local sales representative at [gentec-eo.com/contact-us](https://gentec-eo.com/contact-us)