

CONNECTOR REPAIR PROCEDURES USING PROTON™

Light Damage: Start with Step 3
 Moderate Damage: Start with Step 2
 Extreme Damage: either, a) Perform Step 2 for multiple cycles, or
 b) Start with Step 1

FILM NOTES:

Pressure Sensitive Adhesive (PSA) films:

Peel the backing liner, revealing the adhesive surface, and secure to pad.

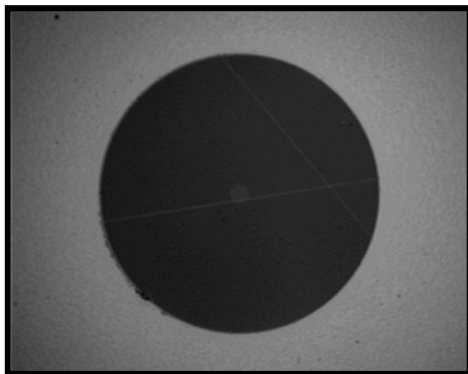
Non-PSA films

Spread a couple drops of water on the rubber pad and place the film, shiny side down.

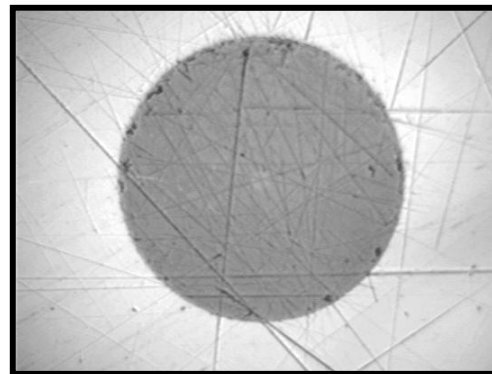
Note: Immediately clean connector with water-dampened wipe after XW step

Connector Type	Step	Damage Level	Film Type	Pad	Pressure	Time*	Water Spray**
2.5mm UPC SC / FC/ ST	1	Extreme →	3um diamond	Orange	2	15 sec.	No
	2	Moderate ←	1um diamond	Purple	3	15-30 sec.	Yes
	3	Light →	XW	Purple	3	15 sec.	Yes
1mm-2mm UPC LC/MU/Termini	1	Extreme →	3um diamond	Orange	2	15 sec.	No
	2	Moderate ←	1um diamond	Orange	2	15-30 sec.	Yes
	3	Light →	XW	Purple	2	15 sec.	Yes
FC/APC SC/APC	1	Extreme →	3um diamond	Purple	2	15 sec.	No
	2	Moderate ←	1um diamond	Purple	3	15 sec.	Yes
	3	Light →	XW	Orange	3	15 sec.	Yes
E2000 UPC	1	Extreme →	1um diamond	Purple	3	30 sec.	No
	2	Moderate ←	1um diamond	Purple	3	15-30 sec.	Yes
	3	Light →	XW	Purple	3	15 sec.	Yes
E2000 APC	1	Extreme →	1um diamond	Orange	2	30 sec.	No
	2	Moderate ←	1um diamond	Orange	2	15-30 sec.	Yes
	3	Light →	XW	Purple	2	30 sec.	Yes

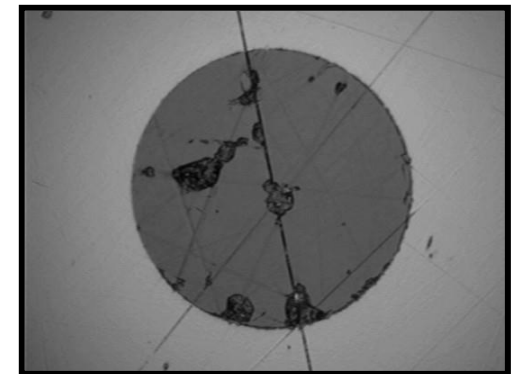
*The Proton™ cycle timer is factory pre-set to 15 seconds. **Just a light spray of water on polishing film is necessary.



Light Damage



Moderate Damage



Extreme Damage