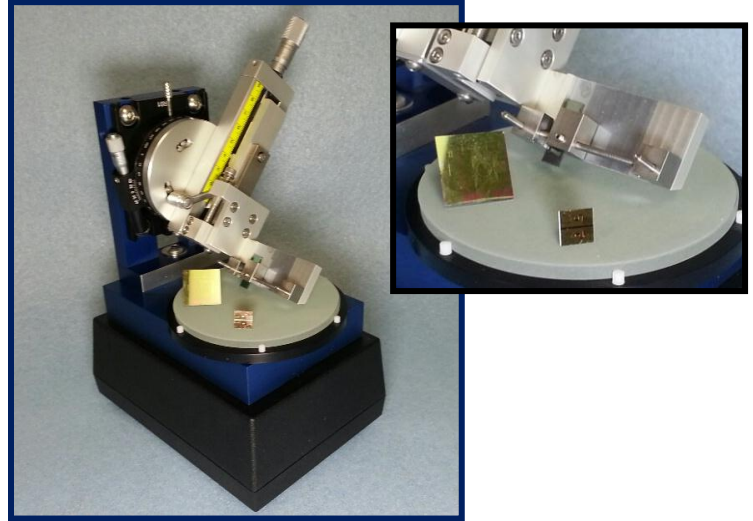


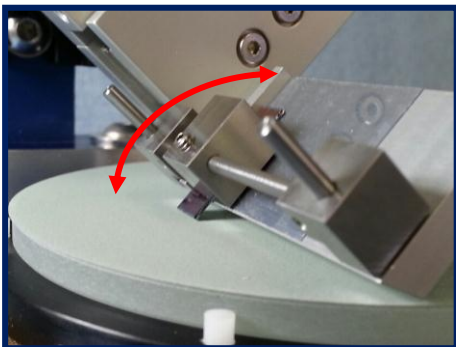
- PROCESSES WAVEGUIDES AND OPTICAL CHIPS**
- ADJUSTABLE FOR VARYING DIMENSIONS**
- FLAT OR ANGLE POLISHING**
- SLIDE AND GUIDE™ COMPONENT HOLDING WITHOUT WAX OR EPOXY**
- OPTIONAL IN-LINE VIDEO INSPECTION**



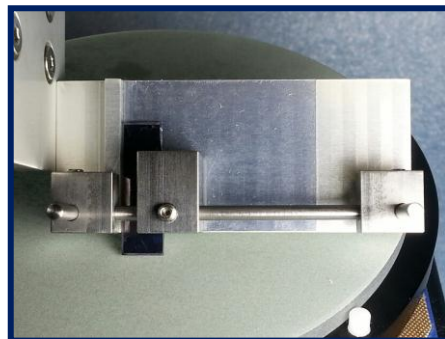
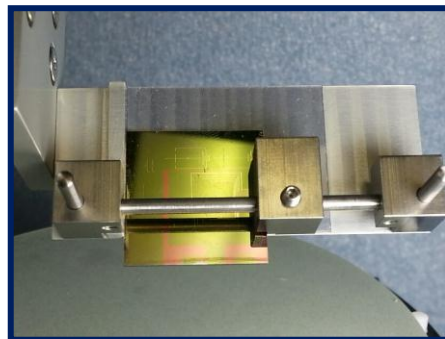
**SPECIFICATIONS AND FEATURES**

FLex™ is designed for the cost-effective processing of waveguides, PLCs, optical chips, and fiber arrays. Its universal carrier secures a variety of component dimensions using the unique "Slide and Guide™" locking mechanism.

Components can be polished with either flat or angled edges. Polishing is controlled via precision linear translation and adjustable pressure application. This produces consistent and repeatable polish yields.



The polishing angle is adjustable for specialized applications.



FLex's universal carrier supports a variety of component dimensions and does not require wax or holding compounds.

**Operational**

**Component Support**

Waveguides, planar lightwave circuits, optical chips, fiber arrays

**Component Dimension Range<sup>1</sup>**

Width: 5mm to 30mm  
Thickness: 0.5mm to 5mm  
Length: >5mm

**Polishing Tolerance**

+/-0.3 degree (X/Y axis along edge)

**Adjustable Polish Angle Range<sup>1</sup>**

0 deg. (flat) to 45 deg.

**Polishing Films**

4 inch diameter

**Polishing Motion**

Random orbital

**Timer**

User adjustable, digital cycle timing

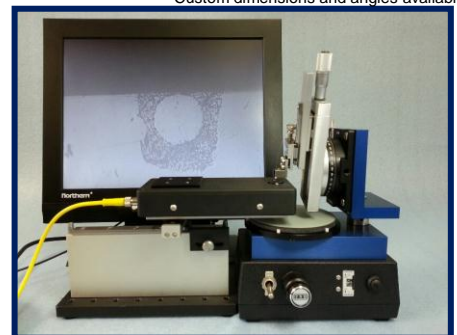
**Power**

AC adapter/9 volt battery

**Size and Weight**

7"x 4.5" footprint  
4.5 lbs

<sup>1</sup> Custom dimensions and angles available.



KrellTech's SpecVision™ In-line Videoscope engages with FLex™ to inspect surface finishes while components are loaded in the polisher.